

Minimum Venue & Equipment Standards – Non-TAB Race Clubs

Introduction

Following a series of venue assessments throughout Queensland, Racing Queensland Limited (RQL) has developed minimum standards, which have been endorsed by the Queensland Country Racing Committee and will be required to be adhered to by all registered Queensland Non-TAB Race Clubs.

RQL recognises the diversity of venues throughout Queensland, and acknowledges regional variances in community and participant standards and expectations. Accordingly, this has been taken into account when developing the RQL minimum standards with consideration afforded to the reduced number of meetings and reduced field sizes at the majority of Non-TAB venues.

In developing minimum standards for racing and training facilities at Non-TAB venues the following categories have been assessed.

- Racing and Training Surfaces
- Rails and Fencing
- Crossings
- Swabbing and Veterinary Facilities
- Saddling Enclosure
- Raceday Officials and Jockeys Facilities
- Tie-Up Stalls
- Raceday Equipment

Compliance with other additional statutory requirements, remain the responsibility of each Non-TAB Race Club.

Objectives

These minimum standards are designed to ensure the provision of a safe working environment for licensees and officials, whilst also delivering quality racing and training facilities that provide adequate conditions for competitive racing and adhere to stringent animal welfare requirements.

Reporting

Due to the diversity of the State, RQL will be reliant upon individual Non-TAB Race Clubs and Country Racing Associations to take a lead role in assessing compliance with the RQL minimum standards.

RQL will introduce a tier of self regulation with each Non-TAB Race Club to be responsible for providing an annual report to its respective CRA outlining compliance, or otherwise, with the minimum standards. This report will be required to be submitted to the Country Racing Associations by the 1st of May each year.

Subsequent to receipt of this information the Country Racing Association will then be required to verify the information provided and to make recommendations to RQL on any compliance issues. This will include the provision of recommendations as to whether these compliance issues can be remedied prior to the next race meeting conducted at the venue, or whether the meeting will need to be transferred to another venue within the region.

The development of this report will provide an opportunity for each Country Racing Association to proactively work with individual Clubs to improve the standards throughout its region.

RQL will provide each Country Racing Association the necessary advice and reporting mechanisms to assess the key areas of compliance within the minimum standards at each Non-TAB Club in its region.

Each Country Racing Association will be required to provide an overarching assessment of its region to RQL as well as a copy of the reports provided by each Non-TAB Club within its region by the 1st of June each year.

RQL Venue Assessment Committee

A venue assessment committee has been developed by RQL and they will be responsible for reviewing the information provided by each Country Racing Association and Non-TAB Race Club.

Following receipt of this information RQL will utilise the information collected during venue assessments undertaken by RQL staff to assess the information provided by the relevant Non-TAB Clubs and the Country Racing Associations. Should any discrepancies arise between all three (3) assessments, RQL will contact the relevant Country Racing Association to finalise any areas of non compliance.

This committee will provide strategic advice to the Country Racing Associations and Non-TAB Race Clubs in relation to the minimum standards set by RQL.

RQL Audits

In addition to self regulation by Clubs and the Country Racing Associations, RQL will conduct an audit every two (2) years of each venue registered to conduct Non-TAB race meetings to assess compliance with the minimum standards.

An audit may be conducted at any venue by RQL with or without prior notice to the relevant Non-TAB Race Club.

Non-Compliance with Minimum Standards

If a Non-TAB Race Club fails to, or cannot meet a minimum standard it must immediately notify RQL and its respective Country Racing Association. Within this notification it should provide full details of the area of non-compliance and what, if any, steps have been taken to remedy this issue.

Upon notification to RQL and the Country Racing Association of non-compliance with the minimum standards, a review of the area of non-compliance will be undertaken and a report developed for consideration by the venue assessment committee.

There will invariably be differing degrees on non-compliance and the venue assessment committee will be required to undertake a risk assessment of each specific instance and determine the appropriate action. Once the risk assessment is finalised, the deficiencies in the minimum standards at a venue will be advised to the Club by way of a formal notice of a Breach issued by RQL.

The venue assessment committee will categorise each breach, and in the formal notice will advise which of the following outcomes will apply.

- Remedial actions and timelines set by RQL
- Suspension of affected services at the venue
- Transfer of race meetings to another Club or venue
- Cancellation or suspension of Club/venue license

Other Statutory Requirements

It is important to note that these minimum standards do not address compliance with other additional statutory requirements regarding the facilities at each venue, and that it is a requirement of each registered Non-TAB Race Club to ensure that all safety measures are in place and operating as intended in accordance with the relevant statutory requirements.

Due to the complexity of these areas of compliance each Non-TAB Race Club should take independent advice in this regard. It will be a requirement that each Non-TAB Club provides RQL an interim report into compliance with the relevant statutory requirements by 1 January 2011.

Should areas of non-compliance be highlighted the report will need to outline proposed remedial action and timelines for the consideration of RQL. From 1 January 2012, each Non-TAB Club will be required to satisfy RQL of compliance with statutory requirement.

Areas of compliance will include, but are not limited to the following:

- Building Code of Australia, relevant State and Local Building requirements (e.g. Building Act 1975, Queensland Development Code)
- Occupational Health & Safety
- Liquor Licensing
- Food Safety

Key Timelines up to 30 June 2012

Date	Requirement
1 May 2010	Non-TAB Clubs to provide annual report to Country Racing Association
1 June 2010	Country Racing Associations to provide annual report to RQL
30 June 2010	RQL to assess feedback from Country Racing Associations and Non-TAB Race Clubs and address areas of non-compliance
1 January 2011	Non-TAB Race Clubs to provide RQL an interim report into compliance with relevant statutory requirements.
1 May 2011	Non-TAB Clubs to provide annual report to Country Racing Association
1 June 2011	Country Racing Associations to provide annual report to RQL
30 June 2011	RQL to assess feedback from Country Racing Associations and Non-TAB Race Clubs and address areas of non-compliance
1 January 2012	Non-TAB Race Clubs to satisfy RQL that its facility complies with relevant statutory requirements.

Summary

RQL has taken a considerable period to develop minimum standards for Non-TAB Race Clubs following the conduct of regional seminars, a major country racing forum and visits to the majority of Non-TAB venues by RQL staff.

These minimum standards will ensure the effective management and sustainability of OH&S protocols for Non-TAB racing and will enable the majority of issues to be managed locally by the relevant Country Racing Associations and Non-TAB Race Clubs.

RQL is of the view that these standards deliver a realistic approach to OH&S throughout regional Queensland and that those Non-TAB Clubs with a proactive approach to OH&S will have no problems achieving these standards.

Racing and Training Surfaces

Turf Tracks

Presentation	<p>Tracks present a uniform dense mat of turf capable of withstanding the rigors of the Club's horse training and racing schedule, providing a safe and consistent surface at all times.</p> <p>If a suitable grass coverage and / or length cannot be achieved, then consideration needs to be given to track being altered to sand or dirt surfaces.</p> <p>All racing and training surfaces are to be free of objects and encroachments. Examples include irrigation sprinkler heads, pop-up sprinklers, drainage swails, distance markers etc. Such objects shall be located outside the railed track surface.</p>
Drainage	Tracks are freely draining and capable of use during and after light rain.
Condition	Turf is to be maintained in optimum health with a strong root system and seasonal leaf growth. All surfaces are to be high density, smooth, free of scalping and weed free.
Turf Management	<p>An integrated pest and disease management program is to be undertaken. Filling in works are to be undertaken after each race meeting or training session.</p> <p>A mowing program should accord with prevailing growing conditions and frequency of racing.</p> <p>Sufficient water is to be applied to the surface to ensure plant health is maintained and the track is presented for race meetings with a rating of not higher than a Good (3).</p>

✓



✓



✘



✘



Sand & Dirt Tracks

Track Structure	<p>The base course is to be a uniform compacted base with no loose gravel or stone and no visible marking, soft spots or pavement failure.</p> <p>The surface course should be a depth of not less than 70mm with material properties that restrict hoof access to the base course.</p> <p>The surface course is to be free of debris with grading sizes as follows.</p> <ul style="list-style-type: none"> • Nominal particle sizes 0.1 – 1.5mm • No particles greater than 5mm in size.
Drainage	<p>Drains to be shaped or cast to allow water to flow and not pond. Club is to have a maintenance program to clean drains and return accumulated material to the track during grading and re-levelling.</p>
Surface Preparation	<p>Tracks are to be harrowed, rolled or trimmed prior to each race meeting to ensure no footprints or hollows remain.</p> <p>Sufficient water is to be applied to the track to relieve jarring, provide secure footing and minimise dust.</p> <p>Track depth is to be measured prior to each meeting and where necessary ripping and grading of the surface is to be undertaken to ensure a consistent surface depth.</p>

✓



✓



✗



✗



Rails and Fencing

Inside Running Rail

Specifications	<p>A complete inside running rail that conforms to the below specifications:</p> <ul style="list-style-type: none"> • Aluminium, steel or plastic rail with a front cross section of not less than 110mm, which provides satisfactory visibility • Minimum height 1000mm • Maximum height 1350mm • Steel or plastic upright posts, offset if possible – no star pickets • Final 100 metres painted red
Maintenance	<p>All components (posts, rails, mesh panels and fittings) are kept in sound condition to ensure structural integrity.</p> <p>An adequate supply of replacement rail and components are maintained on-site to meet replacement needs.</p>
Presentation	<p>The top lines of rails are to be level vertically and horizontally and follow the ground lines of the track, free of any depressions and gaps.</p> <p>Rails are to be completely straight where appropriate with smooth sweeping curves on the bends with no exposed pins or joint protrusions.</p>

✓



✓



✗



✗



Outside Fence

<p>Specifications</p>	<p>A complete outside fence with a minimum height of 1000mm that has a highly visible strip.</p> <p>The outside fence needs to be positioned to ensure no obstacles are accessible to horse and riders and complete separation exists with the on-course patrons.</p> <p>Throughout public areas the fence should be constructed of chain wire or something similar to restrict access by minors to the track.</p> <p>In areas where wildlife are prevalent Club's need to undertake a risk assessment as to the necessity to install a type of fencing that will restrict access.</p> <p>If star pickets are utilised, they must be provided with protective caps.</p>
<p>Maintenance</p>	<p>All components (posts, rails, mesh panels and fittings) are kept in sound condition to ensure structural integrity.</p> <p>An adequate supply of replacement rail and components are maintained on-site to meet replacement needs.</p>
<p>Presentation</p>	<p>Sighter strips or rails are to be at a consistent height and the fencing is to have no exposed pins, joint protrusions, depressions or gaps.</p>

✓



✓



✗



✗



Crossings

Presentation

Work is to be carried out on all track crossings prior to each race meeting to ensure they are free of ridges and depressions caused by vehicular movements, with uniform surface levels, crossfall, a surface that does not cause jarring to horses, profile depth and visual appearance to match the racing surface.

x



x



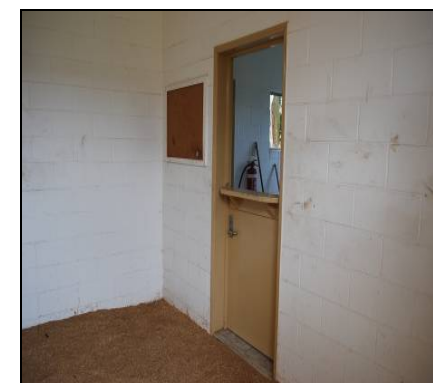
Swabbing & Veterinary Facilities

Specifications	<p>Swabbing facilities are to provide for the following specifications.</p> <ul style="list-style-type: none"> • Optimal horse area size of 16m² • Minimum ceiling height of 3m • No sharp edges or protrusions • Separation between officials and horses that provides both protection and adequate viewing for licensees • Workbench within officials and licensees area • Completely lockable facility • Non-slip flooring • Access to clean fresh water within officials and licensees area • Sink with running water, Hand wash soap dispenser, paper towel, approved sharp's container and rubbish bins to be provided • Preferably air-conditioned, if not, must provide good airflow. Note – Exposed ceiling fans are not considered appropriate.
Presentation	<p>The swab stall is to be cleaned prior to each race meeting and must have clean bedding material to minimise dust.</p>

✓



✓



✗



✗



Saddling Enclosure

Specifications	<p>Saddling enclosures are to provide for the following specifications.</p> <ul style="list-style-type: none">• Completely fenced and signed to restrict unauthorised access• A grass or dirt area for jockeys to mount their horses• A walking track that provides a minimum of 7 metres for each starter up to the maximum field size at the venue• Appropriate segregation between horses and the licensees, owners and officials
Presentation	<p>The saddling enclosure is to be presented clean and tidy with all grass recently mowed and all walking areas presented in a level manner.</p>

✓



✗



Raceday Officials and Jockey Facilities

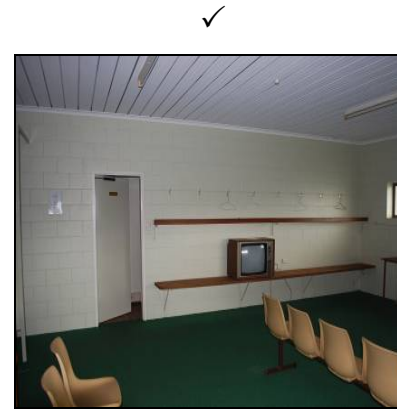
Stewards Room

Specifications	<p>Steward rooms are to provide for the following specifications.</p> <ul style="list-style-type: none">• Table and seating for a minimum of 6 people• 1 power outlet• Preferably air-conditioned, if not, must provide good airflow
Presentation	This area is to be presented clean and tidy for all race meetings.



Male Jockeys Room

Specifications	<p>Male jockeys room to provide for the following specifications, these are to be completely separate from the female facilities.</p> <ul style="list-style-type: none"> • Seating and gear storage for a minimum of 80% of the maximum field size at the venue • Minimum of one toilet and one shower per riders • Preferably air-conditioned, if not, must provide good airflow
Presentation	This area is to be presented clean and tidy for all race meetings.



Female Jockeys Room

Specifications	<p>Female jockeys room to provide for the following specifications, these are to be completely separate from the male facilities.</p> <ul style="list-style-type: none"> • Seating and gear storage for a minimum of 50% of the maximum field size at the venue • Minimum of one toilet and one shower per riders • Preferably air-conditioned, if not, must provide good airflow
Presentation	This area is to be presented clean and tidy for all race meetings.



Note: Jockeys rooms should be interchangeable to cater for the event that more female riders than male riders are in attendance at the meeting.

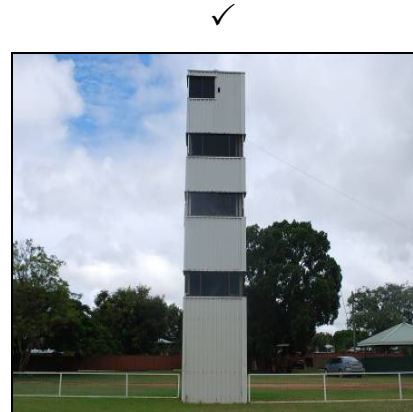
Scales Area

Specifications	<p>Scales area to provide for the following specifications.</p> <ul style="list-style-type: none"> • Area to weigh riders with a level hard floor and 1 power outlet • Fridge or esky for jockeys refreshments • Preferably air-conditioned, if not, must provide good airflow
Presentation	This area is to be presented clean and tidy for all race meetings.



Judges Facility

Specifications	<p>Judging facility to provide for the following specifications.</p> <ul style="list-style-type: none"> • Room to accommodate a minimum of 2 judging staff which aligns with the surveyed finishing line • Ability to view entire circumference of the track • Satisfactory access to enable transportation of heavy equipment • 2 power outlets • Preferably air-conditioned, if not, must provide good airflow
Presentation	This area is to be presented clean and tidy for all race meetings.



Stewards Viewing Areas

Specifications	<p>Stewards towers to meet the following specifications.</p> <p><i>Chief Stewards Tower</i></p> <ul style="list-style-type: none"> • Must meet Australian standard 1657 – 1992 • Provide viewing from a minimum of 3 metres above track level • Any metal towers must be earthed • Provide a head on view to the home straight and lateral viewing <p><i>Head on to Back Straight</i></p> <ul style="list-style-type: none"> • Can be a tower or mounded dirt area providing viewing from a minimum of 2 metres above track level • Any structures must meet Australian standard 1657 – 1992 • Any metal towers must be earthed • Provide a head on view to the back straight
Presentation	This area is to be presented clean and tidy for all race meetings.

✓



✓



✗



✗



Tie-Up Stalls

<p>Specifications</p>	<p>Tie-Up stalls are to provide for the following specifications.</p> <ul style="list-style-type: none"> • Completely fenced and signed to restrict unauthorised access • A minimum of 40 stalls • Non-slip flooring, if dirt must be levelled prior to each race meeting • Access to clean fresh water • Well ventilated • Adequate dimensions for horses with a guide being 3.4m in length, 1.8m in width and 2.6m high • If stalls are located back to back, rear dividers need to be in place to prevent horses being kicked • Fenced walkway to saddling enclosure
<p>Presentation</p>	<p>This area is to be presented clean and tidy for all race meetings.</p>

✓



✓



✗



✗



Raceday Equipment

Barrier Stalls & Towing Vehicle

Specifications	<p>Barrier Stalls are to provide for the following specifications.</p> <ul style="list-style-type: none">• Structurally sound superstructure• Operational front and rear gates• Rear gates are to be in-filled and have appropriate release mechanisms• No sharp edges or protrusions• Appropriate dividers between each stall which are fully in-filled• Padding to dividers• A appropriate locking mechanism on the front gates that restricts gate movement once opened• Operational flashing light• Each starting position is to be clearly marked and appropriately signed
Presentation	<p>The barriers stalls are to be tested prior to each race meeting to ensure all gates are operational, with the front gates opening in unison.</p> <p>A fully operational vehicle is to be provided to tow the barriers between starting locations.</p> <p>In instances where barriers are required to be moved from the track during the conduct of races the towing vehicle is to remain running prior to the start of the race.</p>

✓



✓



x



x



Emergency Horse Float and Screen

Specifications	Each Club is to provide a sight reduction screen, horse float and towing vehicle strategically placed for immediate action when required.
----------------	---

Photo Finish Mirror

Specifications	<p>Photo Finish mirror is to provide the following specifications.</p> <ul style="list-style-type: none">• Surveyed mirror position• Enough height to enable mirrored image of entire track• Survey marks on inside and outside of track to enable realignment
Presentation	The Club must review the alignment of the mirror prior to raceday and advise the steward in charge of the meeting if the alignment is not correct.

✓



x

